

- Food
- Food Additive
- Cosmetic
- Quasi-drug

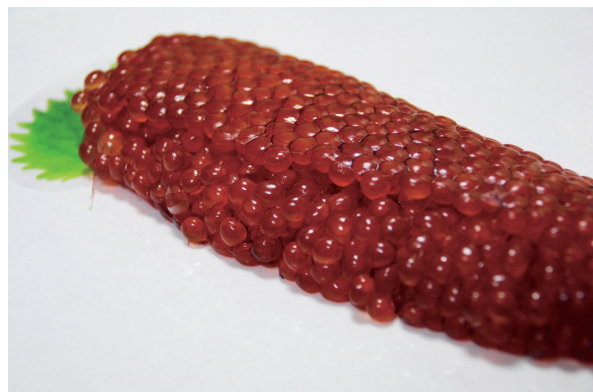


Hokkaido Salmon

『Salmon Ovary Peptide』

Technical
Data

Rich in Amino Acids



It is a peptide extracted from the ovarian envelope of “Shirozake”: chum salmon caught around Hokkaido. In manufacturing “Ikura”: separated salmon roe, we remove the membrane from “Nama Sujiko”: ovary of the salmon. This membrane is the ovarian envelope.

In the case of mammals, the placenta plays a role for the mother to nourish the fetus, but in the case of fish, the one closest to this is the ovarian envelope. For this reason, placenta is rich in amino acids, and functions similar to placenta are expected.

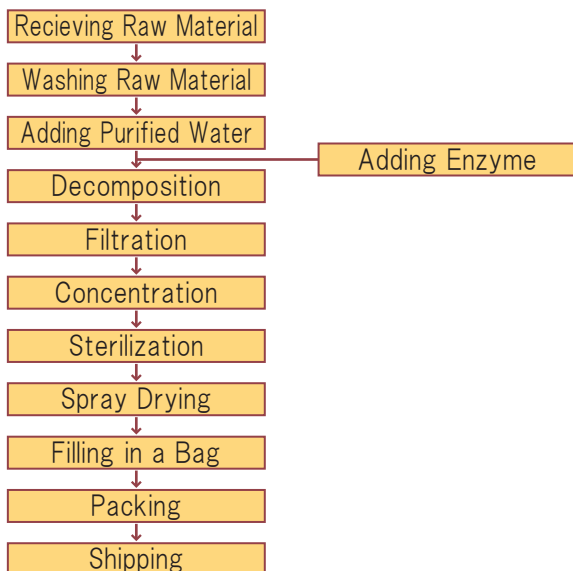
■ Expected Function

- ◎ Anti-aging
- ◎ Suppression of melanin production
- ◎ Suppression of blood pressure increase
- ◎ Normalization of blood sugar level

■ Uses

- ◎ Supplements
- ◎ Drinks

■ Production Process



■ Display Name Example

- ◎ Salmon ovary hull hydrolyzate

■ Quality Standard Composition

Property	Light yellow to yellow brown powder, and has its original scent
Heavy metal (Pb)	Less than 10ppm
Arsenic (As ₂ O ₃)	Less than 2ppm
Total nitrogen	12.0~18.0%
Visual counts of bacteria	Less than 3,000 pcs/g
Coliforms	Negative

■ Chemical Analysis Value (/100g)

Moisture	2.7 g	Aspartic acid	7.58 g
Protein	96.3 g	Alanine	7.12 g
Fat	0.1 g	Arginine	5.76 g
Ash	1.8 g	Isoleucine	3.42 g
Carbohydrate	0.0 g	glycine	13.0 g
Energy	385 kcal	Glutamic acid	12.3 g
Sodium	89.8 mg	Cystine	0.50 g
Salt equivalent	0.2 g	Threonine	3.32 g
		Serine	4.15 g
		Tyrosine	1.68 g
		Valine	4.06 g
		Histidine	1.58 g
		Phenylalanine	2.74 g
		Proline	6.48 g
		Methionine	2.66 g
		lysine	5.64 g
		Leucine	5.83 g
		Tryptophan	0.46 g
		Hydroxyproline	3.21 g

*Numbers are just an analysis example.
It does not guarantee the content of the product.

■ Other

Quantity	1kg
Shelf life	3 years from the production date
Storage condition	Keep in cool dry place, and avoid direct sunlight.

Company Information